



VLF E Series VLF hook up
and control with E-Link



ISO 9001 2008

The World's Source for High Voltage Test Equipment

MADE IN THE USA

High Voltage, Inc. • hvinc.com • p. 518.329.3275 • f. 518.329.3271 • 31 County Route 7A • Copake, NY 12516 USA

Disclaimer

This guide for the High Voltage, Inc. E Series of VLF hipots are meant to be for reference only. The instructions are intended to be clear and simple, but the operator must be trained and qualified according to the established procedures required for the use of this type of equipment. Before operating a VLF Hipot, consult the operators manual.

E-Series VLF Hipot Hook Up

VLF-34E



VLF-65E



HVI ISO 9001 2008

The World's Source for High Voltage Test Equipment

MADE IN THE USA

High Voltage, Inc. • hvinc.com • p. 518.329.3275 • f. 518.329.3271 • 31 County Route 7A • Copake, NY 12516 USA

Step 1: Ground VLF Hipot

Connect the ground stud of the VLF to station ground, concentric neutral of the cable under test, and/or low side of your test object

VLF-34E Shown



Step 2: Install High Voltage Output Cable

Install shielded output cable, tighten ring lug until snug



Step 3: Connect To the Test Object

Connect the Alligator Clip from the High Voltage Output Cable to cable or high side of device under test



Step 4: Check the VLF Measurement Source is set to VLF-34E or VLF-65E

1. Push the blue button to enter Advanced screen
2. Scroll down to “Measurement Source”
3. Push down on the encoder or press the green button
4. Choose VLF-34E or VLF-65E (depending on model)
5. Push down on the encoder or press the green button



Step 5: Test Setup Using The VLF Hipot

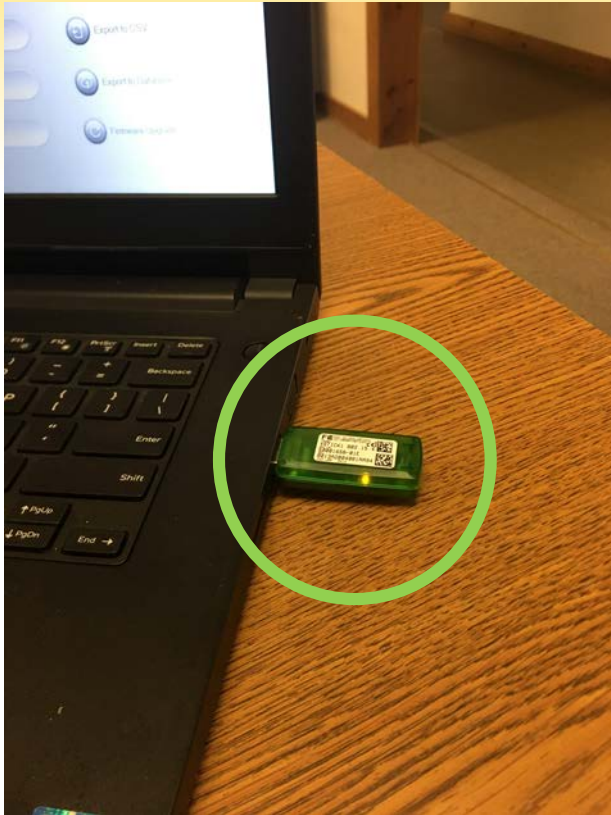


1. Press the blue button for “New Test Setup”
2. Choose desired “Waveform”
 1. Sinewave
 2. Square Wave
 3. Positive DC
 4. Negative DC
3. Choose the desired output frequency (0.1Hz-0.01Hz)
4. Choose voltage step 1
 1. Set up first test voltage per IEEE 400.2-2013
 2. Set duration for 30 minutes to 1 hour
 3. Repeat for step 2 through 5 if need
5. Choose desired “Fault” condition
 1. “Overload on Arc” to have VLF power down if failure occurs
 2. “Burn on Arc” to have VLF condition fault if failure occurs
6. Press the blue button to start the test

Control of VLF and Tan Delta via E-Link with PC



Step 6: Insert the green USB Xbee Antenna into PC



1. Plug green USB Xbee Antenna into PC
2. Install the drivers for the Xbee Antenna
3. Download via the Internet (or)
4. Download via the red or black HVI flash drive

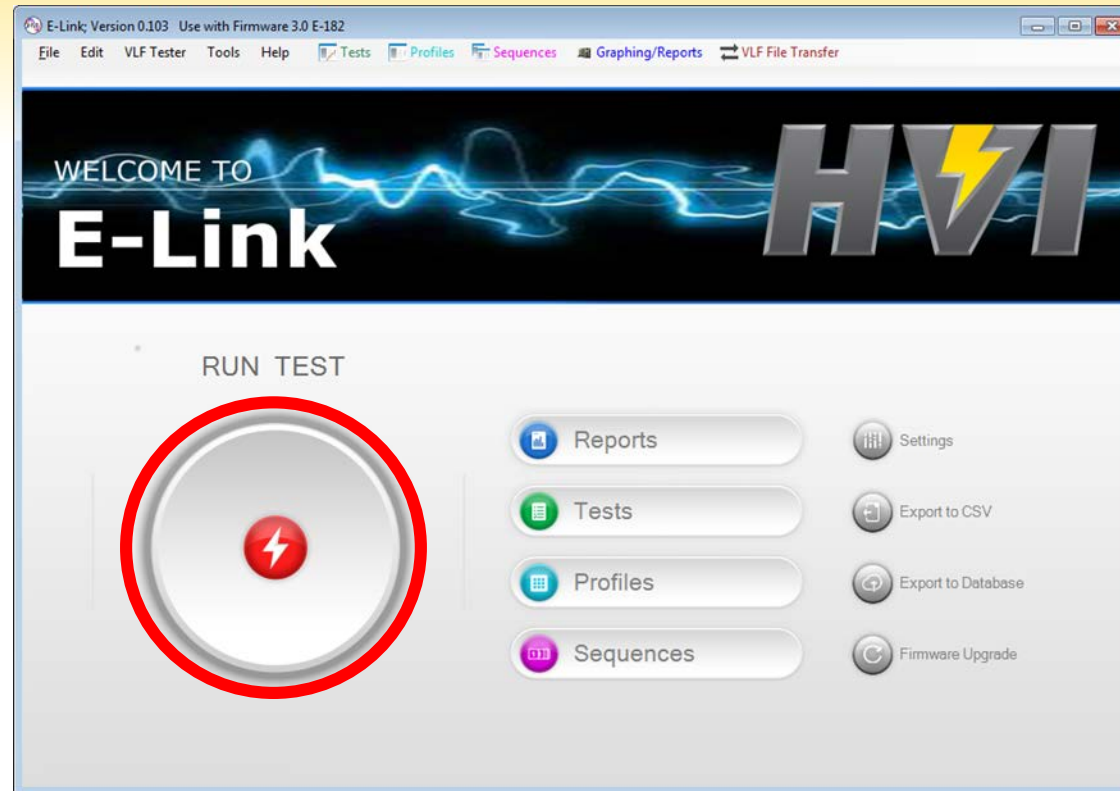
Step 7: Establish Wireless Connection Between VLF and PC via the Xbee Protocol



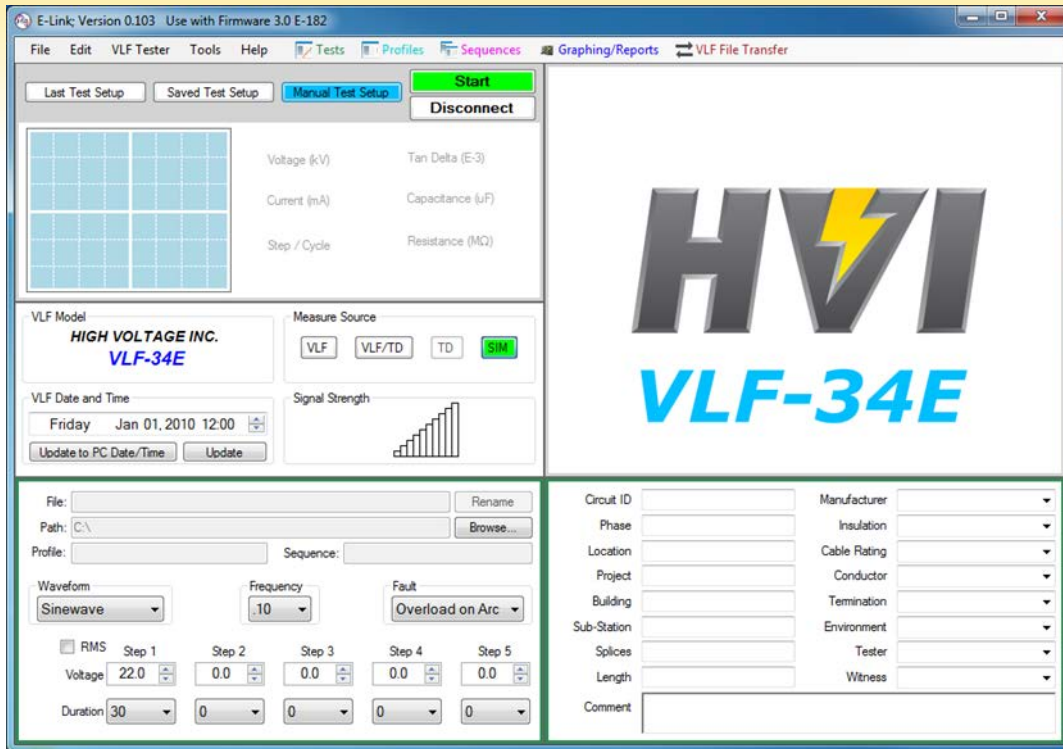
1. Install the E-Link software from the red HVI flash drive
2. Open the E-Link software
3. Click on “Settings”
4. Click on the “Communications” tab
5. Click the “Auto Detect” button
6. The software should automatically assign a serial port
7. Click “Close”
8. If you have issues please contact factory@hvinc.com

Step 8: Test Setup using the E-Link Software

Click "Run Test"



Step 9: Input The Parameters Into E-Link



1. Choose "VLF" as your "Measurement Source"
2. Choose your desired "Waveform"
 1. Sinewave
 2. Square Wave
 3. Positive DC
 4. Negative DC
3. Choose your output frequency (.1Hz to .01Hz)
4. Choose voltage step 1
 1. Set up first test voltage per IEEE 400.2-2013
 2. Set duration for 30 minutes to 1 hour
 3. Repeat for step 2 through 5 if need
5. Choose desired "Fault" condition
 1. "Overload on Arc" to have VLF power down if failure occurs
 2. "Burn on Arc" to have VLF condition fault if failure occurs
6. Click the green "Start" Button

Thank You

from



Thank you for viewing, if you have any questions please contact High Voltage, Inc. or your local High Voltage, Inc. Sales Representative

HVI ISO 9001 2008

The World's Source for High Voltage Test Equipment

MADE IN THE USA

High Voltage, Inc. • hvinc.com • p. 518.329.3275 • f. 518.329.3271 • 31 County Route 7A • Copake, NY 12516 USA